

Fund Fact Sheet

Royal Fidelity (Bahamas) International Investment Fund Alternative Strategies Fund

as of 31 Mar 2018

Investment Objective

The primary objective of the fund is to provide investors with protection from declining markets as well as the opportunity to profit from both advancing as well as declining equity markets through a long-short equity investment strategy.

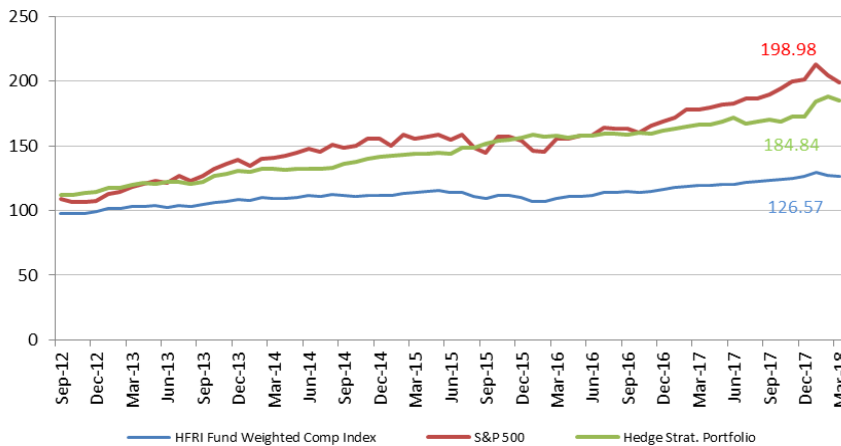
Strategy

The fund invests substantially in the Royal Fidelity Hedge Strategies Fund, which maintains exposure to a portfolio of established institutional Long-Short managers. It may also hold positions in other complimentary alternative strategies.

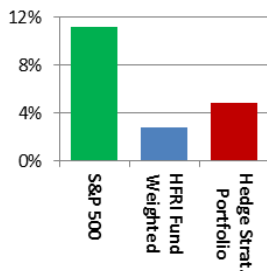
Fund Features

- ◆ Exposure to established institutional hedge fund managers;
- ◆ Ability to profit from both advances and declines in the market;
- ◆ Lower volatility than major market stock indices;
- ◆ An investment should be considered long-term, generally at least five years.

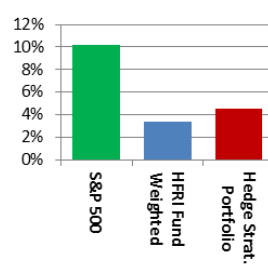
Performance vs HFRI Fund Index and S&P 500 * Sept 12– Mar 18



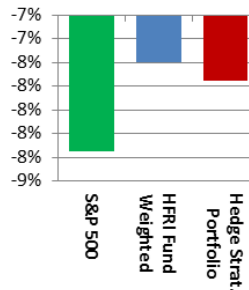
Annualized ROR



Std.Dev.



Max. Drawdown



Risk Profile



Key Facts

Investment Manager: Royal Fidelity Merchant Bank & Trust

Portfolio Manager: Committee

Inception: August 2014

Fund Currency: B\$

Fund Assets: \$3.16M

Fund Type: Long-Short Equity

Min Investment: \$10,000

Min Additional: \$2,000

Dealing Frequency: Monthly

Management Fee: 0.50%

Redemption Fee: Declining Surrender Charge (DSC). Redemptions that occur within the period following initial investment will incur the following charges:

0-24 months	2%
25-36 months	1.5%
37-48 months	1.0%
49-60 months	0.5%
Thereafter	\$50 processing fee

Contact Details

Royal Fidelity Merchant Bank & Trust
Fidelity House
51 Frederick Street
Nassau, Bahamas
T: (242) 356-9801 F: (242) 326-3000

To find out more about this and our other funds, visit our website at www.royalfidelity.com

*Indicative performance with a beginning value of 100. The Alternative Strategies Fund invests substantially all of its assets into Royal Fidelity's USD Hedge Strategies Portfolio. Performance figures and other statistical information shown for the underlying portfolio are shown net of all investment management and advisory fees. Sales charges and other commissions are not included in calculations. Performance figures shown are for Series 1 Shares, and will differ for investors in other Series. Past performance is not a guarantee of future results and all potential investors should consult with a trusted advisor before investing. The Standard & Poor's 500 Index is a cap-weighted index of 500 stocks designed to measure performance of the broad domestic US economy. The HFRI Fund Weighted Composite Index is a global, equal-weighted index of over 2,000 single-manager funds that report to HFR Database. Annualized Return, Std. Dev. and Drawdown figures reflect March 2011 through September 2017.

ROYAL FIDELITY
Money at Work